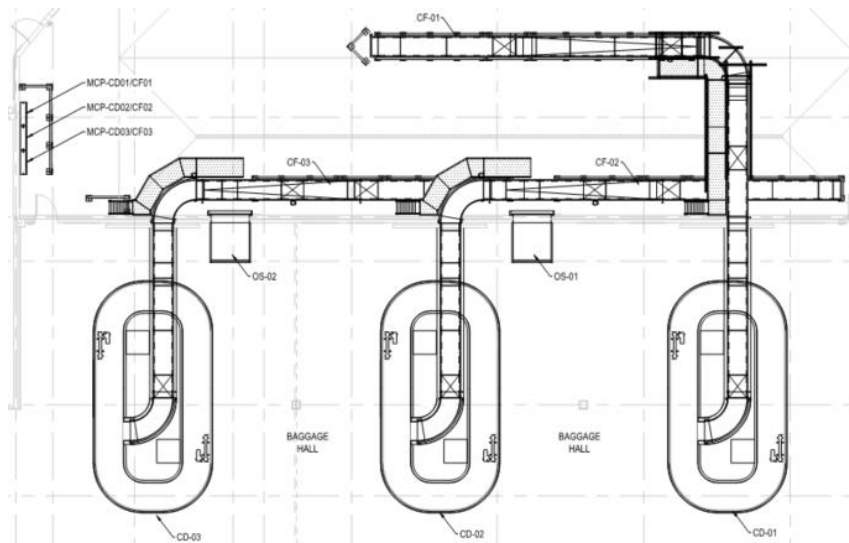




Bill of Materials

BAGGAGE CLAIM REDEVELOPMENT



Sioux Falls Regional Airport

2801 N Jaycee Ln.
Sioux Falls, SD 57104
G&S Project Number: 18FSD1468

Sioux Falls Regional Airport - Conveyor Replacement Components Manifest

Name	Description	Mfg.	Part Number	Equipment Type	System Location	Sys. Qty.
CF01-01	General Transport Conveyor					
6" General Purpose Roller General Transport	Ø 6" x 1.4375" Shaft, 36" Belt, Finger Guarded	G&S	RL36-6023-FG	GT Conveyor Roller (Head, Tail)	CF01-01	2
6" General Purpose Roller General Transport	Ø 6" x 1.4375" Shaft, 36" Belt.	G&S	RL36-6023	GT Conveyor Roller (Snub, Take Up)	CF01-01	2
Return Roller General Transport	Ø 2.5" x 11/ 16" Hex Shaft, 36" Belt.	G&S	RL36-2511	GT Conveyor Roller	CF01-01	2
Bearing (Head, Snub, Take-Up, Tail & Knuckle)	1.4375" Bore, 2 Bolt Flange, Eccentric Loc.	Dodge	F2BSXR107 ABHS	Bearings	CF01-01	8
Bearing Cap (Head, Snub, Take-Up, Tail & Knuckle)	Yellow plastic Cap for F2BSXR107 ABHS	Dodge	EC207	Bearing Cap	CF01-01	8
Motorized Pulley	2.0HP, 480 Volt, 3 Phase, 60 Hz. 1/4" Black Urethane Lagging. 86 FPM .	VDG	TM215B40-620	VDG	CF01-01	1
Cover One Side (COS) Conveyor Belt	36" Wide, 54.2' Long, Black. Laced both ends.	Forbo	907230	Belt	CF01-01	1
CF01-02	General Transport Conveyor					
8.75" Drive Roller General Transport	Ø 8.75" x 3/8" Lagging, 1.6875" Step Down to 1.5" Drive Shaft, For 36" Belt	G&S	RL36-8027-ST67	GT Conveyor Roller (Drives, above 3 HP)	CF01-02	1
6" General Purpose Roller General Transport	Ø 6" x 1.4375" Shaft, 36" Belt, Finger Guarded	G&S	RL36-6023-FG	GT Conveyor Roller (Head, Tail)	CF01-02	2
6" General Purpose Roller General Transport	Ø 6" x 1.4375" Shaft, 36" Belt.	G&S	RL36-6023	GT Conveyor Roller (Snub, Take Up)	CF01-02	2
Return Roller General Transport	Ø 2.5" x 11/ 16" Hex Shaft, 36" Belt.	G&S	RL36-2511	GT Conveyor Roller	CF01-02	3
Snub Roller General Transport	Ø 4.0" x 1.4375" Hex Shaft, 36" Belt.	G&S	RL36-4023	GT Conveyor Roller	CF01-02	1
Bearing (Head, Snub, Take-Up, Tail & Knuckle)	1.4375" Bore, 2 Bolt Flange, Eccentric Loc.	Dodge	F2BSXR107 ABHS	Bearings	CF01-02	10
Bearing Cap (Head, Snub, Take-Up, Tail & Knuckle)	Yellow plastic Cap for F2BSXR107 ABHS	Dodge	EC207	Bearing Cap	CF01-02	10
Bearing (Drive Roller)	1.6875" Bore, 4 Bolt Flange, Eccentric Loc.	Dodge	F4BSXR111 ABHS	Bearings	CF01-02	2
Bearing Cap (Drive Roller)	Yellow plastic Cap for F4BSXR111 ABHS	Dodge	EC209	Bearing Cap	CF01-02	1
GearMotor	3.0HP, 480 Volt, 3 Phase, 60 Hz. 51 RPM, 1.500" Torq Loc Bore.	SEW Eurodrive	ST67 DRN100LM4/BE5HR	GearMotor	CF01-02	1
Longitudinal Ribbed (LR) Conveyor Belt	36" Wide, 73.7' Long, Black. Laced both ends.	Forbo	907229	Belt	CF01-02	1
CF01-03	Power Curve (TS1500/140V2) 51" Inside Radius, 90 Degree					

Sioux Falls Regional Airport - Conveyor Replacement Components Manifest

Name	Description	Mfg.	Part Number	Equipment Type	System Location	Sys. Qty.
	METAL HOLDER UPPER ASSEMBLY	Transnorm	020915	Power Curve	CF1-03	n/a
	METAL HOLDER LOWER ASSEMBLY	Transnorm	020916	Power Curve	CF1-03	n/a
	1-7/16" 3-BOLT FLG UNIT ASSY	Transnorm	022053	Power Curve	CF1-03	n/a
	1-7/16" 2-BOLT FLG UNIT ASSY	Transnorm	020069	Power Curve	CF1-03	n/a
	RETURN IDLER	Transnorm	021034	Power Curve	CF1-03	n/a
	DRIVE PULLEY	Transnorm	P51387I/140	Power Curve	CF1-03	n/a
	TAIL PULLEY	Transnorm	P51387/140	Power Curve	CF1-03	n/a
	Belt Fabrication	Transnorm	B5138S96G90FC/140PG	Power Curve	CF1-03	n/a
GearMotor	2.0HP, 480 Volt, 3 Phase, 60 Hz. 113 RPM, 1.438" Torq Loc Bore.	SEW Eurodrive	ST67 DRN90L4	GearMotor	CF1-03	1
CF01-04	General Transport Conveyor					
8.75" Drive Roller General Transport	Ø 8.75" x 3/8" Lagging, 1.6875" Step Down to 1.5" Drive Shaft, For 36" Belt	G&S	RL36-8027-ST67	GT Conveyor Roller (Drives, above 3 HP)	CF01-04	1
6" General Purpose Roller General Transport	Ø 6" x 1.4375" Shaft, 36" Belt, Finger Guarded	G&S	RL36-6023-FG	GT Conveyor Roller (Head, Tail)	CF01-04	2
6" General Purpose Roller General Transport	Ø 6" x 1.4375" Shaft, 36" Belt.	G&S	RL36-6023	GT Conveyor Roller (Snub, Take Up)	CF01-04	2
Return Roller General Transport	Ø 2.5" x 11/ 16" Hex Shaft, 36" Belt.	G&S	RL36-2511	GT Conveyor Roller	CF01-04	3
Bearing (Head, Snub, Take-Up, Tail & Knuckle)	1.4375" Bore, 2 Bolt Flange, Eccentric Loc.	Dodge	F2BSXR107 ABHS	Bearings	CF01-04	8
Bearing Cap (Head, Snub, Take-Up, Tail & Knuckle)	Yellow plastic Cap for F2BSXR107 ABHS	Dodge	EC207	Bearing Cap	CF01-04	8
Bearing (Drive Roller)	1.6875" Bore, 4 Bolt Flange, Eccentric Loc.	Dodge	F4BSXR111 ABHS	Bearings	CF01-04	2
Bearing Cap (Drive Roller)	Yellow plastic Cap for F4BSXR111 ABHS	Dodge	EC209	Bearing Cap	CF01-04	2
GearMotor	2.0HP, 480 Volt, 3 Phase, 60 Hz. 60 RPM, 1.500" Torq Loc Bore.	SEW Eurodrive	ST67 DRN90L4	GearMotor	CF01-04	1
Cover One Side (COS) Conveyor Belt	36" Wide, 56.1' Long, Black. Laced both ends.	Forbo	907230	Belt	CF01-04	1
CF01-05	General Transport Conveyor					

Sioux Falls Regional Airport - Conveyor Replacement Components Manifest

Name	Description	Mfg.	Part Number	Equipment Type	System Location	Sys. Qty.
8.75" Drive Roller General Transport	Ø 8.75" x 3/8" Lagging, 1.6875" Step Down to 1.5" Drive Shaft, For 36" Belt	G&S	RL36-8027-R67	GT Conveyor Roller (Drives, above 3 HP)	CF01-05	1
6" General Purpose Roller General Transport	Ø 6" x 1.4375" Shaft, 36" Belt, Finger Guarded	G&S	RL36-6023-FG	GT Conveyor Roller (Head, Tail)	CF01-05	2
6" General Purpose Roller General Transport	Ø 6" x 1.4375" Shaft, 36" Belt.	G&S	RL36-6023	GT Conveyor Roller (Snub, Take Up)	CF01-05	2
Return Roller General Transport	Ø 2.5" x 11/ 16" Hex Shaft, 36" Belt.	G&S	RL36-2511	GT Conveyor Roller	CF01-05	3
Snub Roller General Transport	Ø 4.0" x 1.4375" Hex Shaft, 36" Belt.	G&S	RL36-4023	GT Conveyor Roller	CF01-05	1
Bearing (Head, Snub, Take-Up, Tail & Knuckle)	1.4375" Bore, 2 Bolt Flange, Eccentric Loc.	Dodge	F2BSXR107 ABHS	Bearings	CF01-05	10
Bearing Cap (Head, Snub, Take-Up, Tail & Knuckle)	Yellow plastic Cap for F2BSXR107 ABHS	Dodge	EC207	Bearing Cap	CF01-05	10
Bearing (Drive Roller)	1.6875" Bore, 4 Bolt Flange, Eccentric Loc.	Dodge	F4BSXR111 ABHS	Bearings	CF01-05	2
Bearing Cap (Drive Roller)	Yellow plastic Cap for F4BSXR111 ABHS	Dodge	EC209	Bearing Cap	CF01-05	1
GearMotor	3.0HP, 480 Volt, 3 Phase, 60 Hz. 44 RPM, 1.375" x 2.76" Output Shaft.	SEW Eurodrive	R67 DRN100LM4/BE5HR	GearMotor	CF01-05	1
Longitudinal Ribbed (LR) Conveyor Belt	36" Wide, 65.4' Long, Black. Laced both ends.	Forbo	907229	Belt	CF01-05	1
CF01-06	Power Curve (TS1500/140V2) 48" Inside Radius, 90 Degree					
	METAL HOLDER UPPER ASSEMBLY	Transnorm	020915	Power Curve	CF01-06	18
	METAL HOLDER LOWER ASSEMBLY	Transnorm	020916	Power Curve	CF01-06	18
	1-7/16" 3-BOLT FLG UNIT ASSY	Transnorm	022053	Power Curve	CF01-06	2
	1-7/16" 2-BOLT FLG UNIT ASSY	Transnorm	020069	Power Curve	CF01-06	2
	RETURN IDLER	Transnorm	021034	Power Curve	CF01-06	3
	DRIVE PULLEY	Transnorm	P51387O/140	Power Curve	CF01-06	1
	TAIL PULLEY	Transnorm	P51387/140	Power Curve	CF01-06	1
	Belt Fabrication	Transnorm	B5138S96G90FC/140PG	Power Curve	CF01-06	1
	BUSHINGS, TL 2012-1.25	Transnorm	102325	Power Curve	CF01-06	1
	BUSHINGS, TL 2012-1.4375	Transnorm	102328	Power Curve	CF01-06	1

Sioux Falls Regional Airport - Conveyor Replacement Components Manifest

Name	Description	Mfg.	Part Number	Equipment Type	System Location	Sys. Qty.
	GATES 8MX-45S-21-2012 POLYCHAIN SPRKT	Transnorm	104836	Power Curve	CF01-06	1
	GATES 8MX-53S-21-2012 POLYCHAIN SPRKT	Transnorm	104839	Power Curve	CF01-06	1
	GATES 8MGT-1280-21 POLY CHAIN BELT	Transnorm	104939	Power Curve	CF01-06	1
GearMotor	2.0HP, 480 Volt, 3 Phase, 60 Hz. 92 RPM, 1.250" x 2.36" Output Shaft.	SEW Eurodrive	R47 DRN90L4	GearMotor	CF01-06	1
CD01	Incline Carousel					
Caterpillar Drive Chain Assembly	Roller Chain, Includes Extended Drive Links	G&S	IC01-2400A	Incline Carousel	CD01	2
UHMWPE Drive Ramp	Black UHMWPE Chain Guide	G&S	IC01-2510	Incline Carousel	CD01	2
Idler Shaft	Ø1.500" x 11.250", cw 3/8" x 2" Key	G&S	IC01-2610	Incline Carousel	CD01	2
Drive Shaft	Ø1.500" x 26", cw 3/8" x 2" Key	G&S	IC01-2620	Incline Carousel	CD01	2
Drive / Idler Sprocket	12B-2 27 Tooth, 1 1/2" Bore	G&S	IC01-2810	Incline Carousel	CD01	4
Drive / Idler Bearing	1.500" Bore, 2 Bolt Flange	Rexnord	FX3Y224N K6	Incline Carousel	CD01	8
Outboard Bearing	1.500", 4 Bolt Flange	Rexnord	F3Y224N K6	Incline Carousel	CD01	2
Split Ring Locking Collar	Double Split ,1.500" Bore, with Soc. Cap Screws	TB Woods	2SC108	Incline Carousel	CD01	8
Support Wheel Assembly	3" Dia. Black Urethane Molded Wheel, 6301 Precision Bearing	G&S	IC02-1000A	Incline Carousel	CD01	180
Support Wheel Bushing	0.750" Dia x 0.480" Bore x 0.472" Height	G&S	IC02-1020	Incline Carousel	CD01	180
Upper / Lower Wheel Bolt	M12x1.75 x 50mm	G&S	M12x1.75 x 50	Incline Carousel	CD01	360
Guide Wheel Bolt	M12x1.75 x 90mm	G&S	M12x1.75 x 90	Incline Carousel	CD01	90
M12 Nylock Nut	M12 Nylock Nut	G&S	ZNNM8SC-12	Incline Carousel	CD01	360
Spline Assembly	Spline Weldment Includes Support Wheels, Caterpillar Drive Dog	G&S	IC03-1000A	Incline Carousel	CD01	180
CW Flight	14 ga. Formed Stainless Steel with UHMWPE Wear Strip, Clockwise	G&S	IC03-2010CW	Incline Carousel	CD01	180
Buffer	Molded Polyurethane	G&S	IC03-3000	Incline Carousel	CD01	180
Buffer Screws	1/4-20NC x 5/8" Socket Head Cap Screws Black	G&S	1/4-20 x 5/8" Soc Cap BLK	Incline Carousel	CD01	540

Sioux Falls Regional Airport - Conveyor Replacement Components Manifest

Name	Description	Mfg.	Part Number	Equipment Type	System Location	Sys. Qty.
Spline Tie Strap	Nylon Strap, Pre-Punched (Price is per Foot, Sold in 50 foot Rolls)	G&S	IC03-4000	Incline Carousel	CD01	180
GearMotor	3.0HP, 480 Volt, 3 Phase, 60 Hz. 58 RPM, 1.500" Torq Loc Bore.	SEW Eurodrive	KT67 DRN100L4	GearMotor	CD01	2
CF02-01	General Transport Conveyor					
8.75" Drive Roller General Transport	Ø 8.75" x 3/8" Lagging, 1.6875" Step Down to 1.5" Drive Shaft, For 36" Belt	G&S	RL36-8027-ST67	GT Conveyor Roller (Drives, above 3 HP)	CF02-01	1
6" General Purpose Roller General Transport	Ø 6" x 1.4375" Shaft, 36" Belt, Finger Guarded	G&S	RL36-6023-FG	GT Conveyor Roller (Head, Tail)	CF02-01	2
6" General Purpose Roller General Transport	Ø 6" x 1.4375" Shaft, 36" Belt.	G&S	RL36-6023	GT Conveyor Roller (Snub, Take Up)	CF02-01	2
Return Roller General Transport	Ø 2.5" x 11/ 16" Hex Shaft, 36" Belt.	G&S	RL36-2511	GT Conveyor Roller	CF02-01	3
Bearing (Head, Snub, Take-Up, Tail & Knuckle)	1.4375" Bore, 2 Bolt Flange, Eccentric Loc.	Dodge	F2BSXR107 ABHS	Bearings	CF02-01	8
Bearing Cap (Head, Snub, Take-Up, Tail & Knuckle)	Yellow plastic Cap for F2BSXR107 ABHS	Dodge	EC207	Bearing Cap	CF02-01	8
Bearing (Drive Roller)	1.6875" Bore, 4 Bolt Flange, Eccentric Loc.	Dodge	F4BSXR111 ABHS	Bearings	CF02-01	2
Bearing Cap (Drive Roller)	Yellow plastic Cap for F4BSXR111 ABHS	Dodge	EC209	Bearing Cap	CF02-01	1
GearMotor	2.0HP, 480 Volt, 3 Phase, 60 Hz. 42 RPM, 1.500" Torq Loc Bore.	SEW Eurodrive	ST67 DRN90L4	GearMotor	CF02-01	1
Cover One Side (COS) Conveyor Belt	36" Wide, 67.2' Long, Black. Laced both ends.	Forbo	907230	Belt	CF02-01	1
CF02-02	General Transport Conveyor					
8.75" Drive Roller General Transport	Ø 8.75" x 3/8" Lagging, 1.6875" Step Down to 1.5" Drive Shaft, For 36" Belt	G&S	RL36-8027-ST67	GT Conveyor Roller (Drives, above 3 HP)	CF02-02	1
6" General Purpose Roller General Transport	Ø 6" x 1.4375" Shaft, 36" Belt, Finger Guarded	G&S	RL36-6023-FG	GT Conveyor Roller (Head, Tail)	CF02-02	2
6" General Purpose Roller General Transport	Ø 6" x 1.4375" Shaft, 36" Belt.	G&S	RL36-6023	GT Conveyor Roller (Snub, Take Up)	CF02-02	2
Return Roller General Transport	Ø 2.5" x 11/ 16" Hex Shaft, 36" Belt.	G&S	RL36-2511	GT Conveyor Roller	CF02-02	2
Snub Roller General Transport	Ø 4.0" x 1.4375" Hex Shaft, 36" Belt.	G&S	RL36-4023	GT Conveyor Roller	CF02-02	1
Bearing (Head, Snub, Take-Up, Tail & Knuckle)	1.4375" Bore, 2 Bolt Flange, Eccentric Loc.	Dodge	F2BSXR107 ABHS	Bearings	CF02-02	10
Bearing Cap (Head, Snub, Take-Up, Tail & Knuckle)	Yellow plastic Cap for F2BSXR107 ABHS	Dodge	EC207	Bearing Cap	CF02-02	10

Sioux Falls Regional Airport - Conveyor Replacement Components Manifest

Name	Description	Mfg.	Part Number	Equipment Type	System Location	Sys. Qty.
Bearing (Drive Roller)	1.6875" Bore, 4 Bolt Flange, Eccentric Loc.	Dodge	F4BSXR111 ABHS	Bearings	CF02-02	2
Bearing Cap (Drive Roller)	Yellow plastic Cap for F4BSXR111 ABHS	Dodge	EC209	Bearing Cap	CF02-02	1
GearMotor	3.0HP, 480 Volt, 3 Phase, 60 Hz. 51 RPM, 1.500" Torq Loc Bore.	SEW Eurodrive	ST67 DRN100LM4/BE5HR	GearMotor	CF02-02	1
Longitudinal Ribbed (LR) Conveyor Belt	36" Wide, 65.9' Long, Black. Laced both ends.	Forbo	907229	Belt	CF02-02	1
CF02-03	Power Curve (TS1500/140V2) 51" Inside Radius, 90 Degree					
	METAL HOLDER UPPER ASSEMBLY	Transnorm	020915	Power Curve	CF2-03	n/a
	METAL HOLDER LOWER ASSEMBLY	Transnorm	020916	Power Curve	CF2-03	n/a
	1-7/16" 3-BOLT FLG UNIT ASSY	Transnorm	022053	Power Curve	CF2-03	n/a
	1-7/16" 2-BOLT FLG UNIT ASSY	Transnorm	020069	Power Curve	CF2-03	n/a
	RETURN IDLER	Transnorm	021034	Power Curve	CF2-03	n/a
	DRIVE PULLEY	Transnorm	P51387I/140	Power Curve	CF2-03	n/a
	TAIL PULLEY	Transnorm	P51387/140	Power Curve	CF2-03	n/a
	Belt Fabrication	Transnorm	B5138S96G90FC/140PG	Power Curve	CF2-03	n/a
GearMotor	2.0HP, 480 Volt, 3 Phase, 60 Hz. 113 RPM, 1.438" Torq Loc Bore.	SEW Eurodrive	ST67 DRN90L4	GearMotor	CF2-03	1
CF02-04	General Transport Conveyor					
8.75" Drive Roller General Transport	Ø 8.75" x 3/8" Lagging, 1.6875" Step Down to 1.5" Drive Shaft, For 36" Belt	G&S	RL36-8027-R67	GT Conveyor Roller (Drives, above 3 HP)	CF02-04	1
6" General Purpose Roller General Transport	Ø 6" x 1.4375" Shaft, 36" Belt, Finger Guarded	G&S	RL36-6023-FG	GT Conveyor Roller (Head, Tail)	CF02-04	2
6" General Purpose Roller General Transport	Ø 6" x 1.4375" Shaft, 36" Belt.	G&S	RL36-6023	GT Conveyor Roller (Snub, Take Up)	CF02-04	2
Return Roller General Transport	Ø 2.5" x 11/ 16" Hex Shaft, 36" Belt.	G&S	RL36-2511	GT Conveyor Roller	CF02-04	4
Snub Roller General Transport	Ø 4.0" x 1.4375" Hex Shaft, 36" Belt.	G&S	RL36-4023	GT Conveyor Roller	CF02-04	1
Bearing (Head, Snub, Take-Up, Tail & Knuckle)	1.4375" Bore, 2 Bolt Flange, Eccentric Loc.	Dodge	F2BSXR107 ABHS	Bearings	CF02-04	10

Sioux Falls Regional Airport - Conveyor Replacement Components Manifest

Name	Description	Mfg.	Part Number	Equipment Type	System Location	Sys. Qty.
Bearing Cap (Head, Snub, Take-Up, Tail & Knuckle)	Yellow plastic Cap for F2BSXR107 ABHS	Dodge	EC207	Bearing Cap	CF02-04	10
Bearing (Drive Roller)	1.6875" Bore, 4 Bolt Flange, Eccentric Loc.	Dodge	F4BSXR111 ABHS	Bearings	CF02-04	2
Bearing Cap (Drive Roller)	Yellow plastic Cap for F4BSXR111 ABHS	Dodge	EC209	Bearing Cap	CF02-04	1
GearMotor	3.0HP, 480 Volt, 3 Phase, 60 Hz. 44 RPM, 1.375" x 2.76" Output Shaft.	SEW Eurodrive	R67 DRN100LM4/BE5HR	GearMotor	CF02-04	1
Longitudinal Ribbed (LR) Conveyor Belt	36" Wide, 65.4' Long, Black. Laced both ends.	Forbo	907229	Belt	CF02-04	1
CF02-05	Power Curve (TS1500/140V2) 48" Inside Radius, 90 Degree					
	METAL HOLDER UPPER ASSEMBLY	Transnorm	020915	Power Curve	CF02-05	18
	METAL HOLDER LOWER ASSEMBLY	Transnorm	020916	Power Curve	CF02-05	18
	1-7/16" 3-BOLT FLG UNIT ASSY	Transnorm	022053	Power Curve	CF02-05	2
	1-7/16" 2-BOLT FLG UNIT ASSY	Transnorm	020069	Power Curve	CF02-05	2
	RETURN IDLER	Transnorm	021034	Power Curve	CF02-05	3
	DRIVE PULLEY	Transnorm	P51387O/140	Power Curve	CF02-05	1
	TAIL PULLEY	Transnorm	P51387/140	Power Curve	CF02-05	1
	Belt Fabrication	Transnorm	B5138S96G90FC/140PG	Power Curve	CF02-05	1
	BUSHINGS, TL 2012-1.25	Transnorm	102325	Power Curve	CF02-05	1
	BUSHINGS, TL 2012-1.4375	Transnorm	102328	Power Curve	CF02-05	1
	GATES 8MX-45S-21-2012 POLYCHAIN SPRKT	Transnorm	104836	Power Curve	CF02-05	1
	GATES 8MX-53S-21-2012 POLYCHAIN SPRKT	Transnorm	104839	Power Curve	CF02-05	1
	GATES 8MGT-1280-21 POLY CHAIN BELT	Transnorm	104939	Power Curve	CF02-05	1
GearMotor	2.0HP, 480 Volt, 3 Phase, 60 Hz. 92 RPM, 1.250" x 2.36" Output Shaft.	SEW Eurodrive	R47 DRN90L4	GearMotor	CF02-05	1
CD02	Incline Carousel					

Sioux Falls Regional Airport - Conveyor Replacement Components Manifest

Name	Description	Mfg.	Part Number	Equipment Type	System Location	Sys. Qty.
Caterpillar Drive Chain Assembly	Roller Chain, Includes Extended Drive Links	G&S	IC01-2400A	Incline Carousel	CD02	2
UHMWPE Drive Ramp	Black UHMWPE Chain Guide	G&S	IC01-2510	Incline Carousel	CD02	2
Idler Shaft	Ø1.500" x 11.250", cw 3/8" x 2" Key	G&S	IC01-2610	Incline Carousel	CD02	2
Drive Shaft	Ø1.500" x 26", cw 3/8" x 2" Key	G&S	IC01-2620	Incline Carousel	CD02	2
Drive / Idler Sprocket	12B-2 27 Tooth, 1 1/2" Bore	G&S	IC01-2810	Incline Carousel	CD02	4
Drive / Idler Bearing	1.500" Bore, 2 Bolt Flange	Rexnord	FX3Y224N K6	Incline Carousel	CD02	8
Outboard Bearing	1.500", 4 Bolt Flange	Rexnord	F3Y224N K6	Incline Carousel	CD02	2
Split Ring Locking Collar	Double Split ,1.500" Bore, with Soc. Cap Screws	TB Woods	2SC108	Incline Carousel	CD02	8
Support Wheel Assembly	3" Dia. Black Urethane Molded Wheel, 6301 Precision Bearing	G&S	IC02-1000A	Incline Carousel	CD02	180
Support Wheel Bushing	0.750" Dia x 0.480" Bore x 0.472" Height	G&S	IC02-1020	Incline Carousel	CD02	180
Upper / Lower Wheel Bolt	M12x1.75 x 50mm	G&S	M12x1.75 x 50	Incline Carousel	CD02	360
Guide Wheel Bolt	M12x1.75 x 90mm	G&S	M12x1.75 x 90	Incline Carousel	CD02	90
M12 Nylock Nut	M12 Nylock Nut	G&S	ZNNM8SC-12	Incline Carousel	CD02	360
Spline Assembly	Spline Weldment Includes Support Wheels, Caterpillar Drive Dog	G&S	IC03-1000A	Incline Carousel	CD02	180
CW Flight	14 ga. Formed Stainless Steel with UHMWPE Wear Strip, Clockwise	G&S	IC03-2010CW	Incline Carousel	CD02	180
Buffer	Molded Polyurethane	G&S	IC03-3000	Incline Carousel	CD02	180
Buffer Screws	1/4-20NC x 5/8" Socket Head Cap Screws Black	G&S	1/4-20 x 5/8" Soc Cap BLK	Incline Carousel	CD02	540
Spline Tie Strap	Nylon Strap, Pre-Punched (Price is per Foot, Sold in 50 foot Rolls)	G&S	IC03-4000	Incline Carousel	CD02	180
GearMotor	3.0HP, 480 Volt, 3 Phase, 60 Hz. 58 RPM, 1.500" Torq Loc Bore.	SEW Eurodrive	KT67 DRN100L4	GearMotor	CD02	2
CF03-01	General Transport Conveyor					
8.75" Drive Roller General Transport	Ø 8.75" x 3/8" Lagging, 1.6875" Step Down to 1.5" Drive Shaft, For 36" Belt	G&S	RL36-8027-ST67	GT Conveyor Roller (Drives, above 3 HP)	CF03-01	1
6" General Purpose Roller General Transport	Ø 6" x 1.4375" Shaft, 36" Belt, Finger Guarded	G&S	RL36-6023-FG	GT Conveyor Roller (Head, Tail)	CF03-01	2

Sioux Falls Regional Airport - Conveyor Replacement Components Manifest

Name	Description	Mfg.	Part Number	Equipment Type	System Location	Sys. Qty.
6" General Purpose Roller General Transport	Ø 6" x 1.4375" Shaft, 36" Belt.	G&S	RL36-6023	GT Conveyor Roller (Snub, Take Up)	CF03-01	2
Return Roller General Transport	Ø 2.5" x 11/ 16" Hex Shaft, 36" Belt.	G&S	RL36-2511	GT Conveyor Roller	CF03-01	3
Bearing (Head, Snub, Take-Up, Tail & Knuckle)	1.4375" Bore, 2 Bolt Flange, Eccentric Loc.	Dodge	F2BSXR107 ABHS	Bearings	CF03-01	8
Bearing Cap (Head, Snub, Take-Up, Tail & Knuckle)	Yellow plastic Cap for F2BSXR107 ABHS	Dodge	EC207	Bearing Cap	CF03-01	8
Bearing (Drive Roller)	1.6875" Bore, 4 Bolt Flange, Eccentric Loc.	Dodge	F4BSXR111 ABHS	Bearings	CF03-01	2
Bearing Cap (Drive Roller)	Yellow plastic Cap for F4BSXR111 ABHS	Dodge	EC209	Bearing Cap	CF03-01	1
GearMotor	2.0HP, 480 Volt, 3 Phase, 60 Hz. 42 RPM, 1.500" Torq Loc Bore.	SEW Eurodrive	ST67 DRN90L4	GearMotor	CF03-01	1
Cover One Side (COS) Conveyor Belt	36" Wide, 56.9' Long, Black. Laced both ends.	Forbo	907230	Belt	CF03-01	1
CF03-02	General Transport Conveyor					
8.75" Drive Roller General Transport	Ø 8.75" x 3/8" Lagging, 1.6875" Step Down to 1.5" Drive Shaft, For 36" Belt	G&S	RL36-8027-ST67	GT Conveyor Roller (Drives, above 3 HP)	CF03-02	1
6" General Purpose Roller General Transport	Ø 6" x 1.4375" Shaft, 36" Belt, Finger Guarded	G&S	RL36-6023-FG	GT Conveyor Roller (Head, Tail)	CF03-02	2
6" General Purpose Roller General Transport	Ø 6" x 1.4375" Shaft, 36" Belt.	G&S	RL36-6023	GT Conveyor Roller (Snub, Take Up)	CF03-02	2
Return Roller General Transport	Ø 2.5" x 11/ 16" Hex Shaft, 36" Belt.	G&S	RL36-2511	GT Conveyor Roller	CF03-02	2
Snub Roller General Transport	Ø 4.0" x 1.4375" Hex Shaft, 36" Belt.	G&S	RL36-4023	GT Conveyor Roller	CF03-02	1
Bearing (Head, Snub, Take-Up, Tail & Knuckle)	1.4375" Bore, 2 Bolt Flange, Eccentric Loc.	Dodge	F2BSXR107 ABHS	Bearings	CF03-02	10
Bearing Cap (Head, Snub, Take-Up, Tail & Knuckle)	Yellow plastic Cap for F2BSXR107 ABHS	Dodge	EC207	Bearing Cap	CF03-02	10
Bearing (Drive Roller)	1.6875" Bore, 4 Bolt Flange, Eccentric Loc.	Dodge	F4BSXR111 ABHS	Bearings	CF03-02	2
Bearing Cap (Drive Roller)	Yellow plastic Cap for F4BSXR111 ABHS	Dodge	EC209	Bearing Cap	CF03-02	1
GearMotor	3.0HP, 480 Volt, 3 Phase, 60 Hz. 51 RPM, 1.500" Torq Loc Bore.	SEW Eurodrive	ST67 DRN100LM4/BE5HR	GearMotor	CF03-02	1
Longitudinal Ribbed (LR) Conveyor Belt	36" Wide, 60.8' Long, Black. Laced both ends.	Forbo	907229	Belt	CF03-02	1
CF03-03	Power Curve (TS1500/140V2) 51" Inside Radius, 90 Degree					

Sioux Falls Regional Airport - Conveyor Replacement Components Manifest

Name	Description	Mfg.	Part Number	Equipment Type	System Location	Sys. Qty.
	METAL HOLDER UPPER ASSEMBLY	Transnorm	020915	Power Curve	CF3-03	n/a
	METAL HOLDER LOWER ASSEMBLY	Transnorm	020916	Power Curve	CF3-03	n/a
	1-7/16" 3-BOLT FLG UNIT ASSY	Transnorm	022053	Power Curve	CF3-03	n/a
	1-7/16" 2-BOLT FLG UNIT ASSY	Transnorm	020069	Power Curve	CF3-03	n/a
	RETURN IDLER	Transnorm	021034	Power Curve	CF3-03	n/a
	DRIVE PULLEY	Transnorm	P51387I/140	Power Curve	CF3-03	n/a
	TAIL PULLEY	Transnorm	P51387/140	Power Curve	CF3-03	n/a
	Belt Fabrication	Transnorm	B5138S96G90FC/140PG	Power Curve	CF3-03	n/a
GearMotor	2.0HP, 480 Volt, 3 Phase, 60 Hz. 113 RPM, 1.438" Torq Loc Bore.	SEW Eurodrive	ST67 DRN90L4	GearMotor	CF3-03	1
CF03-04	General Transport Conveyor					
8.75" Drive Roller General Transport	Ø 8.75" x 3/8" Lagging, 1.6875" Step Down to 1.5" Drive Shaft, For 36" Belt	G&S	RL36-8027-R67	GT Conveyor Roller (Drives, above 3 HP)	CF03-04	1
6" General Purpose Roller General Transport	Ø 6" x 1.4375" Shaft, 36" Belt, Finger Guarded	G&S	RL36-6023-FG	GT Conveyor Roller (Head, Tail)	CF03-04	2
6" General Purpose Roller General Transport	Ø 6" x 1.4375" Shaft, 36" Belt.	G&S	RL36-6023	GT Conveyor Roller (Snub, Take Up)	CF03-04	2
Return Roller General Transport	Ø 2.5" x 11/ 16" Hex Shaft, 36" Belt.	G&S	RL36-2511	GT Conveyor Roller	CF03-04	4
Snub Roller General Transport	Ø 4.0" x 1.4375" Hex Shaft, 36" Belt.	G&S	RL36-4023	GT Conveyor Roller	CF03-04	1
Bearing (Head, Snub, Take-Up, Tail & Knuckle)	1.4375" Bore, 2 Bolt Flange, Eccentric Loc.	Dodge	F2BSXR107 ABHS	Bearings	CF03-04	10
Bearing Cap (Head, Snub, Take-Up, Tail & Knuckle)	Yellow plastic Cap for F2BSXR107 ABHS	Dodge	EC207	Bearing Cap	CF03-04	10
Bearing (Drive Roller)	1.6875" Bore, 4 Bolt Flange, Eccentric Loc.	Dodge	F4BSXR111 ABHS	Bearings	CF03-04	2
Bearing Cap (Drive Roller)	Yellow plastic Cap for F4BSXR111 ABHS	Dodge	EC209	Bearing Cap	CF03-04	1
GearMotor	3.0HP, 480 Volt, 3 Phase, 60 Hz. 44 RPM, 1.375" x 2.76" Output Shaft.	SEW Eurodrive	R67 DRN100LM4/BE5HR	GearMotor	CF03-04	1
Longitudinal Ribbed (LR) Conveyor Belt	36" Wide, 65.4' Long, Black. Laced both ends.	Forbo	907229	Belt	CF03-04	1

Sioux Falls Regional Airport - Conveyor Replacement Components Manifest

Name	Description	Mfg.	Part Number	Equipment Type	System Location	Sys. Qty.
CF03-05	Power Curve (TS1500/140V2) 48" Inside Radius, 90 Degree					
	METAL HOLDER UPPER ASSEMBLY	Transnorm	020915	Power Curve	CF03-05	18
	METAL HOLDER LOWER ASSEMBLY	Transnorm	020916	Power Curve	CF03-05	18
	1-7/16" 3-BOLT FLG UNIT ASSY	Transnorm	022053	Power Curve	CF03-05	2
	1-7/16" 2-BOLT FLG UNIT ASSY	Transnorm	020069	Power Curve	CF03-05	2
	RETURN IDLER	Transnorm	021034	Power Curve	CF03-05	3
	DRIVE PULLEY	Transnorm	P51387O/140	Power Curve	CF03-05	1
	TAIL PULLEY	Transnorm	P51387/140	Power Curve	CF03-05	1
	Belt Fabrication	Transnorm	B5138S96G90FC/140PG	Power Curve	CF03-05	1
	BUSHINGS, TL 2012-1.25	Transnorm	102325	Power Curve	CF03-05	1
	BUSHINGS, TL 2012-1.4375	Transnorm	102328	Power Curve	CF03-05	1
	GATES 8MX-45S-21-2012 POLYCHAIN SPRKT	Transnorm	104836	Power Curve	CF03-05	1
	GATES 8MX-53S-21-2012 POLYCHAIN SPRKT	Transnorm	104839	Power Curve	CF03-05	1
	GATES 8MGT-1280-21 POLY CHAIN BELT	Transnorm	104939	Power Curve	CF03-05	1
GearMotor	2.0HP, 480 Volt, 3 Phase, 60 Hz. 92 RPM, 1.250" x 2.36" Output Shaft.	SEW Eurodrive	R47 DRN90L4	GearMotor	CF03-05	1
CD03	Incline Carousel					
Caterpillar Drive Chain Assembly	Roller Chain, Includes Extended Drive Links	G&S	IC01-2400A	Incline Carousel	CD03	2
UHMWPE Drive Ramp	Black UHMWPE Chain Guide	G&S	IC01-2510	Incline Carousel	CD03	2
Idler Shaft	Ø1.500" x 11.250", cw 3/8" x 2" Key	G&S	IC01-2610	Incline Carousel	CD03	2
Drive Shaft	Ø1.500" x 26", cw 3/8" x 2" Key	G&S	IC01-2620	Incline Carousel	CD03	2
Drive / Idler Sprocket	12B-2 27 Tooth, 1 1/2" Bore	G&S	IC01-2810	Incline Carousel	CD03	4
Drive / Idler Bearing	1.500" Bore, 2 Bolt Flange	Rexnord	FX3Y224N K6	Incline Carousel	CD03	8

Sioux Falls Regional Airport - Conveyor Replacement Components Manifest

Name	Description	Mfg.	Part Number	Equipment Type	System Location	Sys. Qty.
Outboard Bearing	1.500", 4 Bolt Flange	Rexnord	F3Y224N K6	Incline Carousel	CD03	2
Split Ring Locking Collar	Double Split ,1.500" Bore, with Soc. Cap Screws	TB Woods	2SC108	Incline Carousel	CD03	8
Support Wheel Assembly	3" Dia. Black Urethane Molded Wheel, 6301 Precision Bearing	G&S	IC02-1000A	Incline Carousel	CD03	180
Support Wheel Bushing	0.750" Dia x 0.480" Bore x 0.472" Height	G&S	IC02-1020	Incline Carousel	CD03	180
Upper / Lower Wheel Bolt	M12x1.75 x 50mm	G&S	M12x1.75 x 50	Incline Carousel	CD03	360
Guide Wheel Bolt	M12x1.75 x 90mm	G&S	M12x1.75 x 90	Incline Carousel	CD03	90
M12 Nylock Nut	M12 Nylock Nut	G&S	ZNNM8SC-12	Incline Carousel	CD03	360
Spline Assembly	Spline Weldment Includes Support Wheels, Caterpillar Drive Dog	G&S	IC03-1000A	Incline Carousel	CD03	180
CW Flight	14 ga. Formed Stainless Steel with UHMWPE Wear Strip, Clockwise	G&S	IC03-2010CW	Incline Carousel	CD03	180
Buffer	Molded Polyurethane	G&S	IC03-3000	Incline Carousel	CD03	180
Buffer Screws	1/4-20NC x 5/8" Socket Head Cap Screws Black	G&S	1/4-20 x 5/8" Soc Cap BLK	Incline Carousel	CD03	540
Spline Tie Strap	Nylon Strap, Pre-Punched (Price is per Foot, Sold in 50 foot Rolls)	G&S	IC03-4000	Incline Carousel	CD03	180
GearMotor	3.0HP, 480 Volt, 3 Phase, 60 Hz. 58 RPM, 1.500" Torq Loc Bore.	SEW Eurodrive	KT67 DRN100L4	GearMotor	CD03	2

Sioux Falls

Project # 18-0039

Alliant  Technologies

ELECTRICAL SPARE PARTS LIST

Phone 502-244-7313 Fax 502-244-7317

ITEM	TOTAL QTY	RECOM. SPARE QTY	LEAD TIME (WEEKS)	PART NO.	DESCRIPTION	MANUFACTURER	SUPPLIER
1	16	2	1	100-C12UD10	MS IEC CONTACTOR LOAD SIDE 120VAC COIL 12A	ALLEN-BRADLEY	E & H
2	10	1	1	140M-C2E-B40	MTR PROTECTOR 460V, TRIP RANGE 2.5 - 4.0A	ALLEN-BRADLEY	E & H
3	6	1	1	140M-C2E-B63	MTR PROTECTOR 460V, TRIP RANGE 4.0 - 6.3A	ALLEN-BRADLEY	E & H
4	16	2	1	140M-C-AFA11	MAN MTR START,FRONT MTD AUX CONTACT 1 NO	ALLEN-BRADLEY	E & H
5	15	2	1	1489-M1C050	1 POLE, 5 AMP UL489 BREAKER	ALLEN-BRADLEY	E & H
6	3	1	1	1489-M1C100	1 POLE, 10 AMP UL489 BREAKER	ALLEN-BRADLEY	E & H
7	3	1	1	1489-M1C200	1 POLE, 20 AMP UL489 BREAKER	ALLEN-BRADLEY	E & H
8	3	1	2	1494U-J60-CR-M-PC	DISC 60A ROD-OPER, RK1, METAL HANDLE, COVER	ALLEN-BRADLEY	E & H
9	6	1	2	150-C9NBD	SMC-3 SOFT START 3-9A	ALLEN-BRADLEY	E & H
10	3	1	1	1769-ECR	COMPACTLOGIX END CAP/TERMINATOR R SIDE	ALLEN-BRADLEY	E & H
11	15	2	1	1769-IA16	COMPACTLOGIX 16-PT AC INPUT MODULE	ALLEN-BRADLEY	E & H
12	6	1	2	1769-L30ER	COMPACTLOGIX CPU 1.5MB MEMORY	ALLEN-BRADLEY	E & H
13	9	2	1	1769-OW16	COMPACTLOGIX 16-PT CONTACT OUTPUT MODULE	ALLEN-BRADLEY	E & H
14	3	1	1	1769-PA2	COMPACTLOGIX POWER SUPPLY, 120V, SMALL	ALLEN-BRADLEY	E & H
15	3	1	2	1784-SD1	1GB FLASH MEMORY CARD	ALLEN-BRADLEY	E & H
16	27	3	3	194E-GA20-P11	ENCLOSED DISC.,6X6X4 PNL.,25A,1 NO/1 NC	ALLEN-BRADLEY	E & H
17	3	1	2	2711P-T7C4A8	PANELVIEW PLUS 6.5" TOUCHSCREEN	ALLEN-BRADLEY	E & H
18	29	3	1	42GRU-9202QD	POLARIZED RETROREFLECTIVE QUICK DISCONNECT	ALLEN-BRADLEY	E & H
19	29	3	1	60-2421	90° SWIVEL MOUNTING BRACKET	ALLEN-BRADLEY	E & H
20	10	2	1	700-HA32A1-3	RELAY DPDT 120V COIL TUBE BASE P-T-T	ALLEN-BRADLEY	E & H
21	10	2	1	700-HN100	RELAY BASE SOCKET 8 PIN SCREW TERM	ALLEN-BRADLEY	E & H
22	10	2	1	700-HN157	RETAIN CLIP	ALLEN-BRADLEY	E & H
23	3	1	2	700S-CF620DBC	SAFETY RELAY	ALLEN-BRADLEY	E & H

24	2	1	2	800T-A1D2	PB FLUSH HEAD 30MM GREEN	ALLEN-BRADLEY	E & H
25	2	1	2	800T-A2A	PB FLUSH HEAD 1NO/1NC 30MM, BLK	ALLEN-BRADLEY	E & H
26	7	1	2	800TC-A1D2	PB FLUSH HEAD 30MM GREEN	ALLEN-BRADLEY	E & H
27	2	1	2	800TC-A2A	PB FLUSH HEAD 1NO/1NC 30MM, BLK	ALLEN-BRADLEY	E & H
28	6	1	2	800TC-A2D1	PB MOMENTARY 1 NO FLUSH HEAD BLACK FING-S	ALLEN-BRADLEY	E & H
29	3	1	2	800TC-A9D1	PB MOMENTARY 1 N.O. FLUSH HEAD YELLOW	ALLEN-BRADLEY	E & H
30	3	1	2	800TC-B6D2	PB EXTND HEAD 1NC RED	ALLEN-BRADLEY	E & H
31	36	4	2	800TC-FXP16RA1	IPB RED 120VAC TRANSF/INCAN 1NO/1NC	ALLEN-BRADLEY	E & H
32	9	1	2	800TC-H32D1	SEL SW 2POS KEY LOCKED RIGHT MAINTND	ALLEN-BRADLEY	E & H
33	13	1	2	800TC-P16A	PILOT LIGHT 30MM, 120VAC, AMB LENS	ALLEN-BRADLEY	E & H
34	5	1	2	800TC-PA16G	IPB 30MM 120VAC GREEN LENS 1NO/1NC	ALLEN-BRADLEY	E & H
35	3	1	2	800TC-PA16W	IPB 30MM 120VAC WHITE LENS W/ GUARD 1NO/1NC	ALLEN-BRADLEY	E & H
36	4	1	2	800TC-PB16G	IPB 1NO/1NC 30MM, 120VAC, GRN LENS	ALLEN-BRADLEY	E & H
37	3	1	2	800TC-PT16A	P-T-T PILOT LIGHT 30MM, 120VAC, AMB LENS	ALLEN-BRADLEY	E & H
38	3	1	2	800TC-PT16B	P-T-T PILOT LIGHT 30MM, 120VAC, BLU LENS	ALLEN-BRADLEY	E & H
39	3	1	2	800TC-PT16G	P-T-T PILOT LIGHT 30MM, 120VAC, GRN LENS	ALLEN-BRADLEY	E & H
40	36	4	1	800T-N314	PB LOCK-OUT ATTCH FOR E-STOP	ALLEN-BRADLEY	E & H
41	3	1	4	855EC-B10B4B5P1	STACK LIGHT, STROBE RED, AMBER, HORN	ALLEN-BRADLEY	E & H
42	6	1	4	855H-BCA10CDR5	HORN WITH AMBER BEACON	ALLEN-BRADLEY	E & H
43	3	1	2	855P-AHA1	22.5MM TO 30.5MM HOLE ADAPTER	ALLEN-BRADLEY	E & H
44	3	1	2	855P-B10SH22	PANEL MOUNT SOUNDER	ALLEN-BRADLEY	E & H
45	29	3	1	889N-F5AF-6F	CORDSET	ALLEN-BRADLEY	E & H
46	29	3	1	92-90	REFLECTOR POLARIZED, 2 INCH RND	ALLEN-BRADLEY	E & H
47	12	12	1	LP-CC-10	FUSE CLASS CC 600V TIME DELAY 10A REJECTION	BUSSMANN	E & H
48	9	9	1	LPJ-15SP	FUSE CLASS J 600V TIME DELAY 15A DUAL ELEMEN	BUSSMANN	E & H
49	9	9	1	LPJ-60SP	FUSE CLASS J 600V TIME DELAY 60A DUAL ELEMEN	BUSSMANN	E & H
50	3	1	2	20017	HOUR METER 120VAC	HOBBS	ALLIED
51	6	1	1	17121000010	THERMOSTAT	PFANNENBERG	PFANNENBERG
52	3	1	2	570-130-007	ETHERNET CABLE CAT5E 7FT RED	QUIKTRON	E & H
53	3	1	1	20540	2' FLUORESCENT LAMP F17T8 TL841/ALTO	SHAT R SHIELD	E & H
54	3	1	2	63-23-125-4	POWER CONDITIONER 250 VA	SOLA/HEVI-DUTY	E & H
55	6	1	2	HS1F2AS	TRANSFORMER 2KVA	SOLA/HEVI-DUTY	E & H
56	12	1	18	9001KY197	6 PIN CORE LOCK OPERATOR	SQUARE D	ADVANTAGE